

Reach Greater Heights



FEATURES

Grant Recipients • Board Profile • District Wellness Program • Class Reunions
Scholarships and Funds • Alumni Contact • Teacher Grants



Business Honor Roll

In 2007, the AHSF established the Business Honor Roll to benefit the Alamo Heights School Foundation. If your local business benefits from the patronage of Alamo Heights residents, please consider joining the Business Honor Roll. In return for your contribution, your business will receive tangible exposure via District publications, a donor plaque that you can display in your place of business, and invitations to key gatherings with fellow donors and District leaders.

We would like to acknowledge and thank the 2009-2010 Business Honor Roll Members:

Platinum



Gold



Clayton & Clayton, P.C.

Silver

Alamo Heights Minor Emergency Clinic
Alamo Quarry Market
Bartlett Cocke General Contractors
Carneiro, Chumney & Co., L.C.
Champions Pipe & Supply
Frost
Gorman Foundation
H-E-B Central Market

Jason's Deli
Jefferson State Bank
Kiobassa Provision Co.
Phyllis Browning Company
Porter Loring Mortuaries
Presidio Title
Vital Life Wellness Center

Bronze

Alamo Heights Pet Clinic
Armstrong, Vaughan & Associates, PC
Catto & Catto, LLP
Josephs Men's Wear
JS Satel

Kenneth Krueger, DDS, PA
Mr. M.E. Allison, Jr.
Ms. Marion Yturria Kimbro
Rogers, Morris & Grover, LLP
Samuels Glass Company

Reach Greater Heights

It is my pleasure to announce the Alamo Heights School Foundation will be celebrating its 40th anniversary in 2011! The Foundation was established in 1971 – and it is still going strong.

In honor of this milestone year, the Foundation has truly become re-energized. You may notice that we have a new look this year. For our anniversary, we thought it appropriate to have a little “facelift”, if you will. We wanted to pay tribute to our roots but show that we are still vibrant for the next 40 years as we strive to Reach Greater Heights!

It is a privilege for me to serve as President of the Alamo Heights School Foundation. We have a dedicated team of volunteer board members who are committed to our mission of strengthening the community by enriching the lives of students and teachers. We were able to accomplish this in 2009-10 by giving the Alamo Heights ISD over \$500,000 to raise education to the next level!

Some of the highlights of our funding include:

- Teacher salaries
- District Wellness Coordinator and Program
- Glenn P. & Sally R. Ramsdell Chair in English, who has also served as the district’s “writer-in-residence” for both students and teachers
- Teacher for Academic Excellence in Science
- Teacher Grants

Members of our community recognize that our future depends upon providing the best education for the children in our school district. In order for the AHISD to meet its strategic goals and to avoid operating at a deficit, they need additional funding.

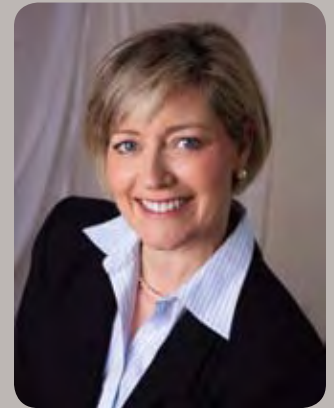
I would like to thank the 2009-10 campaign chairs: Kyle Beck for leading the FACE campaign, and Joey Satel for his work on the Business Honor Roll. We were able to make an impact on our students and teachers as a result of their incredibly hard work, and that of their committees.

The entire Foundation Board wants to express its appreciation to Patti and Mark Mays for chairing our 2010-11 annual campaign, known as FACE. We also want to thank Jim Goudge for chairing our Business Honor Roll campaign. These are community leaders who are making a difference in the education of our children! Headlines in the media point to the fact that the entire nation is focused on the importance of improving education – so it is nice to know the Alamo Heights community has been financially supporting education for the past 40 years. Together with your contribution, this is the year that we will Reach Greater Heights!

Sincerely,



Susan O. Gragg



Making a Difference

OUR MISSION

The Alamo Heights School Foundation mobilizes community support for current and long-term strategies that enhance and perpetuate district-wide academic opportunity and excellence for our children.



Courtesy of Mark Humphries Photography

A second grader learns with Mrs. Gibbens using TeacherMate

Video Games Help Teach

Video games. Do those words make you want to roll your eyes and sigh? They can seem to be the death of us sometimes. Fortunately, Rebecca Gibben's 2nd grade class at Cambridge is using them with good purpose thanks to one of the Foundation's annual teacher grants!

TeacherMates are gaming systems that are about the size of a Nintendo DS and are loaded with leveled, differentiated learning games that align with the Texas Essential Knowledge and Skills and current reading curriculum. All students use their own assigned TeacherMate with headphones. Each child is challenged according to his or her readiness level. Mrs. Gibbens is able to tailor the instruction, see student data and generate reports. These teaching tools have even been featured on the Today Show. Mrs. Gibbens said "Thanks so much to the Alamo Heights School Foundation for allowing my students the opportunity to use these handheld devices. They love using them and their motivation for learning has skyrocketed." Learn more about the TeacherMate at www.innovationsforlearning.org.



Courtesy of Mark Humphries Photography

Ms. Dixon and her student magnifying soil samples through use of a Proscope.

Portable Proscopes Allow Greater Observation

Thanks to a grant from the AHSF, Debbie Dixon's 5th grade students at Woodridge now have a tool that plugs into the USB port of any computer to magnify and photograph any object. The world of science has exploded for these students who will now have the opportunity to see what the naked eye cannot. These lightweight hand-held devices are easy to use. Students have been able to explore the microscopic world, observe scientific phenomena, draw or write what they see and compare data. During a unit on Earth Science, students are able to use the Proscopes to analyze soil samples. They are able to visualize the differences in soil types and further investigate what might cause erosion, how to prevent erosion, understand which plant species grow best in certain conditions and why and how to enrich soil in order to enhance plant growth.

In Life Science, 5th grade scientists will use the Proscope to visualize the cell structure of a sheep's eye. They will closely observe structures such as the retina, lens, optic nerve, the muscle and fat cells.

"Science has never been so exciting! The students love the Proscopes," Ms. Dixon exclaims. "Students are highly engaged and motivated to connect writing and drawing to what they are seeing... the Proscope gives students a heightened visual sensitivity and will allow them to view a world so small it is often overlooked."

Woodridge principal Dr. Cordell Jones states: "I'm so pleased and impressed with our young scientists. The level of excitement and engagement is off the charts. Students stop me as I'm walking by the classroom and pull me in to show me what they are doing. That is the excitement these Proscopes bring."



Courtesy of Mark Humphries Photography

FOUNDATION BOARD MEMBER PROFILE

Cory Bakke

Cory (Nentwich) Bakke graduated from the AHHS class of 1986. She earned a BA in History from Texas Christian University and Master's Degree in Land Economics and Real Estate from Texas A&M University. She is married to Phil Bakke, class of 1984. They met at Howard Elementary School, and have been married 20 years. Their older son Brandt graduated from AHHS this past June, marking the third generation of graduates on both sides of the family.

Carol Cory Nentwich, Cory's mom, graduated in 1960, and her class just celebrated its 50th reunion. Carol Peacock Bakke, Cory's mother-in-law, graduated in 1956.

In 1998, Cory and Phil established Bakke Development Corp., a real estate firm that focuses on retail and multi-family development, construction and management in San Antonio and surrounding areas. Most recently they launched their newest venture, Housing 1 Source™, a company that assists military families moving to San Antonio. They eventually plan to open locations near other major military installations across the United States.

1) Why do you support the Foundation?

I feel a strong personal connection to the Foundation that dates back to my time as a college student. I received the Campbell Scholarship when I was a graduate student at Texas A&M University, which covered my tuition entirely allowing me to avoid the burden of enormous debt which most graduate students incur.

2) Why do you feel it is important to get involved?

As a parent and a patron of AHISD, I feel so fortunate that my children can attend San Antonio's finest schools. Very few cities can boast a viable public school option such as our city. I'm sure that many of our former students would agree that because of AHISD, they chose to return to San Antonio and raise their family here because they knew that their children would receive the best education.

3) What are some of the things you see the Foundation doing that affect your children?

Over the years, through involvement at the campus level, I became aware of the amazing things that the Alamo Heights School Foundation provides to the District. I learned that our District has the most qualified and experienced teachers of any district in San Antonio; and that our District can attract and retain these teachers through highly competitive salary packages, partially funded by the Foundation's annual contribution. As my children attended every school throughout the District, they were touched in the classroom by the many innovative and creative programs funded by Foundation grants. Through my involvement on the Foundation Board, I discovered endowed teaching positions the Foundation funds through the incredible generosity of our donors, including the Ramsdell Chair in English, and the Teacher for Excellence in Science. Most recently, I have become passionate about our new AHISD Wellness Program. I hope that we will soon add it to our list of endowed positions so that we can continue the important work of educating our students as well as fighting for their overall well-being.

4) What are some of your favorite memories?

Too many to name, but here are a few:

- * Cheering on the Mules at football, basketball and baseball games.
- * Favorite classes: Mr. White's Psychology, Mr. Foerster's Calculus and Miss Wis's Algebra II.
- * Fun in the chemistry lab - watching Richard Moore create a mustard gas bomb.
- * Off-campus lunch - I still love Zito's, Chris Madrid's and Tekas.
- * Making lifelong friends.

5) What were some of your favorite involvements in high school?

I enjoyed participating in student government, especially Student Council and various Class Officer positions.

The AHSF Board is comprised of a group of dedicated volunteers who have boundless energy and enthusiasm for the Alamo Heights School District. They contribute time, money and invaluable resources to support the children of our community.

Their great ideas are never shadowed by personal gain and they support the organization and its decisions. The AHSF has the desire to get work done and the commitment to see it through.



Courtesy of Mark Humphries Photography

2010-2011 Board of Directors

BACK ROW, L TO R: Jyl Cain, David Rogers, Elaine Bright, Tiffany Mills, Darryl Mix, Amy Dunn Smith, Kevin Brown, Susan Gragg, Doreen Magoon, Joey Satel, Pam Cohen, Anne Krause, Katie Meissner, Peter Herff, Lisa Krenger, Carolyn Spurgeon

FRONT ROW, SEATED L TO R: Amy Benedikt, Richard Ellwood, Ann McRae, Kyle Beck, Josie Flesher, Cory Bakke, Jim Daniell

NOT PICTURED: Kelly Cavender, Joe Dubrof, John Low



WELLNESS PROGRAMS

In an effort to implement the goals outlined in the District’s strategic plan, AHISD hired a Wellness Coordinator, Michelli Gomez, LCSW, to create and begin implementation of the District-wide wellness program. During the first six months of her tenure, she created and implemented nine different programs impacting the over 4,500 students.

KITCHEN TABLE SESSIONS

These sessions are a new model for parent education and a major component of the Wellness Program. Parents volunteer to host the District Wellness Coordinator in their homes and invite other parents to attend. Ms. Gomez visits with these small groups of parents in their homes to discuss relevant issues. Since January 2010, over 30 kitchen table sessions have been completed addressing a variety of issues ranging from drug and alcohol awareness to cyber-bullying.

SOBER GROUP

Ms. Gomez, in conjunction with Dawn Hedgepeth, AHHS Crisis Counselor, created a completely confidential “sober” group for students desiring to be drug-free. According to Gomez, the purpose of the group is to provide students with a safe place where they can receive peer support and better understand drug dependence and motivation for use.

DRUG AND ALCOHOL REHABILITATION PROGRAM

AHISD has a coordinated plan for identifying and supporting students who need drug and alcohol rehab. In this program, Ms. Gomez provides in-home visits with the entire family, intervention with the student, and facilitates entrance into rehab as needed. As a result of this program, seven students were placed in inpatient treatment programs. After completion of inpatient therapy, all were subsequently enrolled in the District’s new Relapse Prevention Program.

RELAPSE PREVENTION PROGRAM

AHISD has implemented a coordinated wellness initiative designed to support students returning from drug and alcohol rehabilitation and their families. Students placed in inpatient rehabilitation treatment are required to participate in this new program as a condition of returning to school. According to Gomez, the purpose of this program is to help hold students accountable for their sobriety but also to ensure that the District is doing its part to support returning students.

DISTRICT FACULTY AND STAFF EDUCATION

Ms. Gomez is also helping to train and prepare teachers on a variety of issues including: 1) identification of precursors to risky behavior, 2) identification of drug and alcohol use and 3) effective communication and intervention with students and families.

DISCIPLINARY ALTERNATIVE EDUCATION PROGRAM DAEP AT ROBBINS ACADEMY

All Alamo Heights Junior School and High School students placed at DAEP as a result of drug and alcohol offenses are required to attend 20-30 days at the District’s alternative education program which includes a weekly support group. Prior to the initiation of the Wellness Program, these students received academic instruction but were provided no additional emotional support or skills training to help them understand their drug and alcohol use. Ms. Gomez said, “The biggest impact of the support group was the change in the students’ perceptions of themselves and their belief in and trust of support groups and the supportive environment.”

COMMUNITY REINFORCEMENT

This part of the program takes us outside and into the community and reach the greater Bexar County area. Ms. Gomez has met with local business owners, police departments, churches and community organizations to engage them in drug and alcohol awareness. Through a partnership with Youth Empowerment & Support (YES), Time Warner Cable, Trinity University and A&E Television, an episode of the Emmy Award winning program, *Intervention Town Hall* was filmed. Ms. Gomez served on a panel of experts in front of an audience of over 400 people to discuss the underlying issues of adolescent drug addiction. This program reached the greater Bexar County area. Due to the Foundation, the District has been able to create a comprehensive wellness program that benefits the whole child and impacts all students in the District and community. If you would like to make a donation to support the Wellness Program in perpetuity, please contact Amy Smith at the Foundation office at 210-832-5957 or asmith@ahisd.net.

WELLNESS PROGRAM DONORS

- | | |
|--|---|
| A&E Television Networks
Mr. & Mrs. Phillip Bakke
<i>In Memory of Mardie Goldsbury</i>
Mr. & Mrs. Anthony R. Canty
Mr. & Mrs. Eric Foltz
Frost National Bank
Mr. & Mrs. Don B. Frost
Dr. & Mrs. Paul Geibel
Goldsbury Foundation
Mr. & Mrs. W. Michael Humphreys
Mr. & Mrs. Carroll Jackson | The John and Florence Newman Foundation
The Kim and Rod Lewis Family Foundation for Hope and Charity
Mr. & Mrs. Rick Leeper
Mrs. Kathryn S. Martinez
Mays Family Foundation
Mr. & Mrs. Craig McMahon
Ms. Lou Eda Nixon
Silver Eagle Distributors, L.P. |
|--|---|

FUNDS AND RECIPIENTS

The Faye Langley Cowden Chair for Elementary Education



Courtesy of Mark Humphries Photography

Carol Espensen with her second grade students.

The Faye Langley Cowden Chair of Elementary Education was established through the Alamo Heights School Foundation in 1994 through a gift from Mrs. Faye L. Cowden, in honor of Mrs. Cowden and the Alamo Heights Class of 1930. Mrs. Cowden was a graduate of the Class of 1930 and a former elementary school teacher. As a long-time resident of San Antonio, she made many generous contributions to the community. The Faye Langley Cowden Chair recognizes an outstanding elementary teacher who represents the best traditions in instruction and dedication of teachers in Alamo Heights. The recipient is named to the chair for a three-year term and receives a stipend and funds to carry

out projects that enhance learning in the classroom.

The 2010-2013 recipient of the Faye Langley Cowden Chair is Carol Espensen. Mrs. Espensen is currently a second grade teacher at Cambridge. She strives to enhance the connections students make with the real world and has many projects planned. The activities will cover many areas including environmental science – plants and trees, geocaching tours, Audubon studies, water conservation, water resources and the history of herbs and seasonal herb markets.

Mrs. Espensen's students will begin working on planting and maintaining an herb garden on the Cambridge campus this fall. Students will research early medicinal uses for common herbs and current uses for herbs in medicine and cooking. Students will also create edible goods in the classroom that use the home-grown herbs. In addition, seasonal herb markets will be scheduled so that students can become entrepreneurs and sell plant clippings to the faculty and staff. Students will formulate a business plan to decide how best to use the profits to further enhance these efforts. This project, along with the many others, promise to make learning in Mrs. Espensen's room exciting and enriching. This is Carol Espensen's twenty-seventh year of teaching. Nineteen of those years have been at Cambridge Elementary. She earned her BA in English and Education and MA in Education from the University of the Incarnate Word.

Picture Cards Facilitate Communication

The AHSF has provided non-verbal students greater access to their environment by providing Suzie Hogan, Speech-Language Pathologist, with materials to allow easy production of laminated pictures to help non-verbal children communicate. As a team, the teachers create students' schedules, choice boards and overlays to use with voice output devices. They make picture cards for PECS Picture Exchange Communication System books. Language-delayed students at Howard now have access to more opportunities for communication throughout their day.

Some students use picture cards or voice output devices to ask for favorite snacks, request preferred toys, follow a picture schedule, make choices and play in specific areas on the playground. Ms. Hogan said, "It is exciting to see all students being able to ask for what they want and need."

By pressing on a recognizable picture icon, a non-verbal student at Howard was able to tell Howard's principal Dan Bolen what she wanted using her voice output device. Ms. Hogan said, "It was the first time they were able to directly communicate with each other! We are so appreciative of the Foundation's grant support provided to all the students at Howard."

SCHOLARSHIPS



L to R: Campbell Scholars Lee Willis, Courtney Hobza, Gage Liesman, Kristan Best, Gregory Mandel, Dakota Bowen

W. W. AND ANNA MAY CAMPBELL SCHOLARSHIP

The W. W. and Anna May Campbell Scholarship was established in 1985 to provide scholarships for graduates of Alamo Heights High School who are attending state or other publicly supported schools and who are sophomores or above in class standing. Recipients of the Campbell Scholarships are selected based on scholastic ability and financial need.

2010 Recipients: Kristan Best, Dakota Bowen, Carolina Canizales, Christine Celaya, Liliana Escamilla, Michelle Gonzaba, Hillary Hendry, Courtney Hobza, Demetra Kelenis, Gage Liesman, Gregory Mandel, Amber Ramirez, Alex Salazar, Lee Willis

SHIRLEY FITCH ENGLISH MEMORIAL SCHOLARSHIP

The Shirley Fitch English Memorial Scholarship was established in 1985 to award an annual scholarship for a graduating senior who has demonstrated academic effort, improvement, perseverance and has demonstrated school spirit through involvement in extracurricular activities.

2010 Recipient: Meghann Blake

JON MCWILLIAMS MEMORIAL AWARD

The recipient of the Jon McWilliams Memorial Award is a student-athlete who, most importantly, is a decent, honest young person, and a worthy citizen of the school and larger community. The recipient is a good student who has shown determination, and who, through spirit and dedication, has worked to achieve his or her personal best in competitive athletics representing Alamo Heights High School.

2010 Recipient: Thomas McSween

MCPHERSON FAMILY MEMORIAL SCHOLARSHIP AWARD

The McPherson Family Memorial Scholarship Award was established to go to a graduating senior female athlete of Alamo Heights High School. Selection is made by the Coaching Staff and the Athletic Director of the High School. Qualities to be used as a guide in making the selection include team spirit, honesty, self sacrifice, an unselfish attitude, dedication to the team and the sport, fairness, courtesy, perseverance, self-determination, good attendance in workouts and academic performance.

2010 Recipient: Sarah Waltz

THE BOB WARE MEMORIAL SCHOLARSHIP

Dr. Phil Farmer was one of the first recipients of the Bob Ware Memorial Scholarship. Farmer attended Howard Elementary, Alamo Heights Junior School and graduated in 1973 from Alamo Heights High School. As a student, he recalls that he made good grades until high school. His parents divorced when he was 14 years old and he lived with his mother, who worked night shifts at the hospital. His brother graduated from AHHS and was away at college by the time he entered high school. He considers his saving grace was his participation in athletics in which he excelled. Being alone so much and having few real friends during the transitional time from junior school to high school, he began to believe that he was not very smart, just an average student and a “jock”.

Farmer recalls, “At graduation, I received one of the first Bob Ware Scholarships. It was shocking! I had never been publicly recognized in my entire life for anything. How was I to know that my teachers had been watching, hoping and expecting things of me during those years? I am still deeply honored and moved to tears when I think of the honor given me by that one scholarship. It was never about the money, though that helped; it was about believing in a fragile kid who couldn’t believe in himself.” Dr. Farmer credits his homeroom teacher, Ms. Kathleen Maxwell, Ms. Bond, Mr. Cox and baseball coach Bill Horlen among those teachers who especially believed in him. Dr. Farmer said that no one who knows him believes him when he says he was a shy kid who never thought he would amount to anything. He states, “I have been fortunate and blessed, but the first blessing was that scholarship. To discover that my teachers saw something I could not see in myself gave me something I desperately needed.”



Dr. Farmer graduated from Baylor with a degree in social work, received his master’s degree in social work and PhD in Clinical Social Work research from the University of Texas at Arlington. Today, he is the Executive Director of Special Health Resources for Texas, Inc., a health care agency that provides care to indigent people, people with HIV/AIDS and substance abuse counseling for people living in the 23 counties of Northeast Texas. He has had the honor of impacting his community in other countries, including South Africa, where he spent time last summer to help the people of RandAid, Inc., develop HIV/AIDS treatment programs and clinics.

BOB WARE MEMORIAL SCHOLARSHIP

The Bob Ware Memorial Scholarship was established in 1975 to award scholarships to Alamo Heights seniors who achieve above expectations and are involved in extra-curricular activities of AHHS.

2010 Recipient: Stuart Biltz

OMA E. VORDENBAUM SCHOLARSHIP

The Oma E. Vordenbaum Scholarship was established in 1977 for graduating seniors enrolled in Alamo Heights High School seeking higher education. The recipient should also have many of the qualities Mrs. Vordenbaum exemplified herself and valued in others, including intellectual curiosity and a love of learning, perseverance and seriousness of purpose, an honest and direct approach, sincerity, trustworthiness, unselfishness, neatness in work and appearance, and respect for others.

2010 Recipients: Angelina Rogers and Zoe Jasso (Pictured Left)



SUPPORTING EXCELLENCE

The Foundation's General Endowment

The Foundation's General Endowment was created in the Fall of 2002 with the goal of obtaining long-term financial security for AHISD and to support the District's programs. Currently the General Endowment provides for the annual salary for the Teacher for Academic Excellence in Science. The Teacher for Academic Excellence was established in 2007 to encourage distinguished teachers at the secondary level for advanced independent studies and curriculum development.

GENERAL ENDOWMENT

Mr. & Mrs. Michael J. Bolner
Dr. & Mrs. Jerry Christian
Ms. Patricia L. Hartman
Mr. & Mrs. Bill Kingman
Mr. & Mrs. Judd Kraft
Mr. & Mrs. Andrew O. Mitchell
Mr. Bruce Raymond Nelson
Mr. & Mrs. Dan C. O'Connor
Dr. & Mrs. Patrick Palmer
Mr. & Mrs. David Reitblatt
Mr. & Mrs. Pete S. Sitterle III
Mr. & Mrs. Paul H. Smith

TRIBUTES

Mr. & Mrs. Judd Kraft
In Honor of Mr. & Mrs. Cooper Boddy
Mr. & Mrs. David Reitblatt
In Honor of Mr. Mark Reitblatt
Mr. & Mrs. Pete S. Sitterle III
In Memory of Mr. William Hollingshead
Mr. & Mrs. Paul H. Smith
In Memory of Mr. Charles Sawtelle
Mr. & Mrs. Andrew O. Mitchell
In Memory of Mr. William Hollingshead
Mr. & Mrs. Dan C. O'Connor
In Memory of Mrs. Margaret W. Brannan

Rob Boldrick Memorial Fund

The Rob Boldrick Memorial Fund was established in 1991 to support teachers whose study, training, or program development will help students with a penchant for learning and academic achievement; and those interested in careers in sciences, mathematics, and language arts. Two grants were funded through the 2009-10 Rob Boldrick Award: Sue Thomas purchased Geometer Sketchpads and helped students visualize math concepts in a concrete way; Kay Caldwell attended a conference to learn new ways of bringing Shakespeare alive for high school English students in the classroom.

Johnnie Eng Fund for Teaching Excellence

The Johnnie Eng Fund for Teaching Excellence was established upon his retirement in 2003 to honor the impact Mr. Eng had on the lives of his students and colleagues. As a result of the Johnnie Eng Fund, six teachers were selected to attend special training with the Schlecty Center as part of the AHISD strategic plan.

DONORS:

Mrs. Mayline E. Hogan
Ms. Blair B. Perry
Ms. Maria E. Smith

The Caroline Gose Fund

The Caroline Gose Fund was established in memory of Caroline Gose, a 2003 Alamo Heights graduate, to support a joint student/faculty project benefiting the High School and the Alamo Heights community in the areas of journalism, theater or community service, reflective of Caroline's interests. 2010 Recipients: Interact Club's Trip to the North Pole benefitting terminally ill children; Jabberwocky Literary Magazine

DONORS

Ms. Karan Callaway

TRIBUTES

Mr. & Mrs. Stan Steiger
In Memory of Caroline Gose
Alamo Heights HS Baccalaureate
In Honor of Monica Gose
In Honor of Suzanne Thomas
Mr. & Mrs. Clyde Alexander
In Honor of Monica Gose

Monica Gose

In Honor of Ms. Marianna H. Gose
In Honor of Mr. William McCoy
Mr. & Mrs. David L. Harris, Jr.
In Honor of Ms. Marianna H. Gose
Mr. & Mrs. Stephen A. Katz
In Honor of Ms. Marianna H. Gose
Dr. & Mrs. C. Stuart Pipkin
In Honor of Miss Courtney Wright

The Ida M. Kennedy Fund

The Ida M. Kennedy Fund was established in memory of Mrs. Kennedy, a math teacher at the Junior School. She was remembered for her ability to inspire her students, individualize her curriculum, and encourage academic excellence for her math students and the students she served by sponsoring the National Junior Honor Society.

Graham Ladensohn Memorial Lecture Series

Established in 1991, the Graham Ladensohn Memorial Lecture Series brings inspirational and educational speakers for the community and the Alamo Heights Independent School District faculty. Dr. Mark Taylor, an education consultant, dedicated to helping schools better understand and serve our students for learning, development, persistence and successful integration into the "after college" world, spoke to the faculty on Meet Generation NeXt as part of the 2010 Graham Ladensohn Lecture.

Glenn R. and Sally P. Ramsdell Fund

The Glenn R. and Sally P. Ramsdell Fund was established in 2007 through a bequest from Miss Jacqueline Ramsdell. The income generated funds a teaching position in the area of English at the AHHS. The position of the Glenn R. and Sally P. Ramsdell Memorial Chair in English should be filled with a highly creative, enthusiastic person whose primary task shall be to nurture excitement in literary pursuits within the children of the Alamo Heights High School. Gretchen Bernabei was hired as the Ramsdell Chair in English in August 2009.

Roundup for Excellence

The Roundup for Excellence supports teaching and academic excellence throughout the Alamo Heights Independent School District and sports related extra-curricular activities at Alamo Heights High School.

Thanks to the generous support of 2010 Sponsors:

BARON:

Paloma Blanca Mexican Cuisine

TRAIL BOSS:

Alamo Heights Minor
Emergency Clinic
Cory & Phil Bakke
Kathy & Albert Biedenharn
Beverly & Fred Brown
Jyl & Randy Cain
Clayton & Clayton, P.C.
Julie and Joe Dubrof
Kelly & Karl Fellbaum /
Jan & Stan Studer
Nancy & Bill Maloy
Mays Family Foundation
Shari & John Stankey
Phyllis & Mike Viola

WRANGLER:

Alamo Heights Minor
Emergency Clinic
Marcia & Chip Archer
Anne-Marie & Jeff Bailey /
Cheryl & Billy Freed
Tisha & Kyle Beck
Cambridge PTO Executive
Committee
Cavender Toyota
Commerce Title
Kelly & Jim Daniell and Cypress
Breeze Guesthouse

Joy & Triple Fuhrmann /
Lisa & Jim Wolff
Jenny & Jay Gibson
Suzanne & Jimmy Goudge
Susan & David Gragg
Laura & Kennon Guglielmo
Clayton & Robin Hudnall
/ Lisa & Todd Piland
Jefferson Bank
Leigh Ann & Greg King
Kim Kujawa
Manners Rock by Cheryl Vollmer
Marshall Companies
Kathi & Ray Martinez / Sallie
& John Newman
Wendy & Dave Meaden
Tiffany Mills / Mary Beth Mosbacker
OCO Architects
Kim & Joe Peacock / Sharon
& Carter Thurmond
Julie & Justin Peeler
Jill & Bobby Rosenthal
Isa & David Shetler / Carolyn
& Mark Thornton
Andrea & Pete Sitterle
Sunshine Cottage School
for Deaf Children
Lorrie & Arthur Uhl
Walsh, Anderson, Brown,
Aldridge & Gallegos P.C.
Cathy & Bob Wolfe

Guests enjoy the 2010 RoundUp for Excellence.



Martha Spoor Young Writers Fund

The Martha Spoor Young Writers Fund was established in honor of Martha Spoor, a 1987 graduate of AHHS and an English teacher at the Junior School for almost 14 years. Her goal was to instill in young people a lifelong love of expressing themselves in their writing through the use of critical thinking and creativity. The income from the fund will be used to enhance the writing program at AHJS through a special summer writing workshop. The first grant was awarded from this fund in June 2010 for a workshop led by Ramsdell Chair of English Gretchen Bernabei.

DONORS

Mrs. Jill Adams
Mr. & Mrs. Drew Cauthorn
Mr. & Mrs. Frank P. Edmondson
Mr. & Mrs. Richard F. Halter
Mr. & Mrs. Alan McNeill
Mr. & Mrs. Paul A. Rode
Mr. Stephen A. Spoor

TRIBUTES

Mr. & Mrs. Kenneth W. Allen
*In Memory of Mrs. Burdetta
Marshal Kines van Hardeveld*
Argyle Foundation
In Memory of M. E. Hall
Dr. Harold Brannan
*In Memory of Mrs. Burdetta
Marshal Kines van Hardeveld*
Mrs. Frank Dalton
*In Memory of Mrs. Burdetta
Marshal Kines van Hardeveld*
Mrs. Sue Dullnig
In Memory of Ms. Martha L. Spoor
Galloway, Scott & Katherine
Family Foundation
In Memory of Ms. Martha L. Spoor
Mr. & Mrs. A. Jack Hurt
In Memory of Ms. Martha L. Spoor
Dr. & Mrs. Allan Kownslar
*In Memory of Miss Ernest
Mae Seaholm*
Mr. & Mrs. Thomas A. McRae
*In Memory of Mrs. Burdetta
Marshal Kines van Hardeveld*
Mr. & Mrs. George Parker
In Memory of Ms. Martha L. Spoor
Mrs. Rose Ranson
*In Memory of Miss Ernest
Mae Seaholm*
Mr. & Mrs. Pete S. Sitterle III
*In Memory of Mrs. Burdetta
Marshal Kines van Hardeveld*
Dr. & Mrs. Dan Spoor
In Memory of Mrs. Martha L. Spoor
Mr. & Mrs. David Spoor
*In Memory of Mrs. Elva Wisakowsky
In Memory of Ms. Martha L. Spoor
In Memory of Mrs. Burdetta
Marshal Kines van Hardeveld
In Memory of Mrs. Margaret
W. Brannan*

Mrs. Tookie Spoor
*In Memory of Miss Ernest
Mae Seaholm*
Mr. & Mrs. James O. Thompson, Sr.
*In Memory of Mrs. Burdetta
Marshal Kines van Hardeveld*
Mr. & Mrs. James H. Travis
*In Memory of Mrs. Burdetta
Marshal Kines van Hardeveld*
Mrs. Kristi Kessler Walters
In Memory of Ms. Martha L. Spoor
Mrs. Frances Marley Cline
In Honor of Mrs. Tookie Spoor
Ms. Johanna Comuzzi
In Honor of Mrs. Tookie Spoor
Mr. & Mrs. John Girdley
In Honor of Mrs. Mary L. Zeigler
Mr. & Mrs. A. Jack Hurt
In Honor of Mr. & Mrs. David Spoor
Mr. & Mrs. David Spoor
*In Honor of Ms. Eleanor Plummer
In Honor of Mrs. Kristi Kessler Walters
In Honor of The Rev. Julia
Boyd Mitchener*
Ms. Susan Spoor
*In Honor of Mrs. Tookie Spoor
In Honor of Mr. & Mrs. David Spoor
In Honor of Mr. David Spoor*
Mrs. Tookie Spoor
*In Honor of Mrs. Mary Norman
In Honor of Mrs. Ellen Zachry Carrie
In Honor of Mr. David Spoor
In Honor of Mrs. Laura Halter Chaput
In Honor of Mrs. Lucille Lowe
In Honor of Dr. Martha
Cocke Wiltamuth
In Honor of Mrs. Mary L. Zeigler
In Honor of Mrs. Wilma Sosa
In Honor of Mr. Randy White
In Honor of Marie McPherson
In Honor of Anthony Montanio
In Honor of Ms. Sandra B. Ashworth*
Mr. & Mrs. Dan Webster
In Honor of Mrs. Tookie Spoor
Miss Mercille Wisakowsky
In Honor of Mrs. Tookie Spoor

Teacher Grants

The Alamo Heights School Foundation Grants program was established in 1998 as Innovative Grants to encourage teachers at all levels to be innovative in their approach to teaching; to help motivate and inspire their students to learn by developing an activity or approach outside the normal curriculum/teaching patterns.

Beginning in the 2009-2010 school year, the Foundation selected four focus areas for its grants to AHISD faculty and staff. These four areas align with the Strategic Plan adopted by AHISD in May 2009:

ALL LEARNING WILL BE ENGAGING, RELEVANT & CHALLENGING

AHSF supports the district's strategies in planning for learning experiences for all children to help students attain high academic achievement. The focus for this grant area will be on academic excellence attained through additional educational experiences for all children.

CLOSING THE ACHIEVEMENT GAP

AHSF recognizes the need for differentiated instruction in the core curriculum to address the different needs of students.

HIGH-PERFORMING FACULTY AND STAFF

AHSF centers on the belief that the most important factor in learning is the teacher. Therefore, grant money is awarded to help improve the quality of teaching within AHISD as well as to recognize and encourage staff excellence and innovative teaching practices.

CREATE A CULTURE OF PARTICIPATION THAT ENSURES EQUITABLE ACCESS TO ACADEMIC ACTIVITIES

AHSF will assist in creating a culture that ensures equitable access to academic activities to all students.

AHISD teachers: Nicole Osborne, Carol Espensen, Sunshine Munoz, and Shannon Blady



Grant Recipients

AHSF awarded \$48,750 in grants to teachers in the Alamo Heights Independent School District during the Foundation's annual Prize Posse on November 17 and 18.

The Foundation's annual competitive grant program is open to all teachers to encourage classroom creativity towards completion of the District's strategic plan. The Foundation received 49 grant requests totaling \$170,000 as part of a competitive application process. The amount awarded is a small portion of the approximately \$500,000 the Foundation contributes to the Alamo Heights School District annually. The money was awarded to 20 groups of faculty members and will benefit students at all campuses. The Foundation Grants awarded are:

DISTRICT WIDE:

Late Bus Service (800 students, \$13,500) for the entire District will be funded to ensure that all students have access to after-school activities, including clubs, tutoring, library use and/or sports.

ALAMO HEIGHTS HIGH SCHOOL:

Genetic Research Using Biotechnology (Grades 9-12, 270 students, \$5,000) Alamo Heights High School students who are taking advanced courses in Life Sciences are reporting that they intend to major in a related field in college and plan to seek a PhD, practice medicine, or enter into a research-based career. In an effort to better prepare these students to achieve their academic goals, the AHHS project is focused on providing engaging laboratory experiments that have been designed at a technologically challenging level to stimulate students' interest and comprehension in the fields of molecular biology, cellular biology and genetics. Teachers: Eric Atkins, Jeanette Branchizio, Lisa Jones.

Sand/Play Therapy Kit (Grades 9-12, 20 students, \$380) will be used with at-risk students struggling with issues that are difficult to discuss, and to resolve them in a healthy way. Teachers: Dawn Hedgepeth, Cheryl Dunn.

Equity Access to Technology in Mathematics (Grades 9-12, 200 students, \$1,400) will fund the purchase of ten graphing calculators, plus batteries, for ASC and CR classrooms. Teacher: Barbara Johns.

ALAMO HEIGHTS JUNIOR SCHOOL:

Differentiated Math Resources (Grades 6-8, all math levels, \$1,100) to purchase materials to assist students strengthen their math skills, connect concepts to procedures, and to help instructors provide motivating, challenging and meaningful experiences for all students. Teacher: Kimberly Brady.

Spanish Books for the Library (Grades 6-8, 200 students, \$1,000) Additional books written in Spanish will be purchased for use by Spanish immersion students, as well as ESL/ELL students to foster dialogue and engagement between students and parents. Teachers: Jackie Caruso and Steffanie Persyn.

Visually Engaging Library (Grades 6-8, \$971) will fund the purchase of Boldprint Graphic Novels and Poetry, which will be used to connect enthusiasm for this style of reading with comprehension, critical thinking, and character education. Teachers: Annette Kessler and Bea Fallis.

MIT - Mentoring is Teaching (Grade 6, 15 students, \$700) builds positive relationships between high school mentors and at-risk junior school students, and assist in the transition to junior high. Teacher: Julie Little.

CAMBRIDGE ELEMENTARY SCHOOL:

IXL Math (First Grade, 161 students, \$300) is a web-based, leveled math program with engaging graphics for skills and enrichment that will be used by all first grade students to work and progress at their own rate, which will be enriching while helping students learn to love math. Teachers: Elizabeth Cantu, Amanda Cowley, Jennifer De Leon, Josephine Cornwell, Brandi Specia, Jan Barnes, Mildred Ojeda and Mayra Garcia.

iEARN-USA (Grades 3-5, 150 students, \$2,235) to purchase a school membership enabling teachers and students to intensify the level of engagement in curriculum through collaborative projects, developing global citizenship, and developing an international awareness. Teacher: Cristie Christopher.

Destination Math (Grade 5, 150 students, \$1,647) materials will be purchased which provide a challenging and personalized curriculum for all math students, and includes progress monitoring for immediate feedback between teacher and student. Teachers: Christy Kabanek and Sherry Garner.

Connecting Science Through Leveled Reading (Grade 5, 180 students, \$713) Delta Science Readers, which align to state standards for language arts and science, will be purchased. These readers are engaging and full of color photographs which will help students develop literacy skills while building foundational science knowledge. Teacher: Sally Reese.

Texas Tall Tales (Grade 4, 187 students, \$728) Students will combine facts from Texas history with engaging and exaggerated writing to create their own Texas tales, and after watching the Magik Theater perform, the students will transform their stories from page to stage. Teacher: Jimmie Walker.

Grant Recipients CONT.

CAMBRIDGE ELEMENTARY SCHOOL: CONT.

Brain Research Study Group (Pre-K – 5th grades, 800 students, \$2,912) will create a community within District staff for shared learning, discovery, the generation of knowledge, and to apply Quantum Learning brain-based strategies to new research areas and classroom challenges. As many as 40 teachers from Cambridge, Woodridge and Howard will work together to study, research, share articles, and generate application possibilities. Teachers: Jimmie Walker, Charlotte Dolat and Dan St. Romain.

WOODRIDGE ELEMENTARY SCHOOL:

Close, Closer, Closest (Grade 3, 150 students, \$1,680) funds will be used to purchase 10 microscopes and related materials which enhance the science curriculum, prepare students for upper level science courses, and generate enthusiasm for sciences. Teachers: Tracy Brawner.

TAKScopes (Grades 1-5, 875 students, \$2,950) is a science program that provides visual, auditory, and kinesthetic learners to experience science in a way that meets students' learning styles, allowing students to be actively engaged in science investigations. This program integrates math, language arts, technology, and social studies reflecting the real world. Teacher: Julie Diehl, Michelle Dugie, Karen Huber and Jeannie Hickey.

FLIP! To Learn It! (5th Grade, 180 students, \$3,826) A FLIP video mobile lab, containing 12 video cameras will be purchased for video projects, targeting communication skills, thinking and problem solving, research and presentation of information to others. Teachers: Alma Gonzalez, Roxana Montes-Bazaldua, Debbie Dixon, Charlotte Dolat, Nancy Gonzales, Jeanne Hickey, Carol Johns and Shawn Simpson.

Starting Your Day with the Daily CAFÉ (Grades 1-5; 1,100 students; \$3,110) 50 website memberships and related supplies will be purchased for staff to use for improving literacy practices in the classroom and assessing needs of the students. Woodridge and Cambridge teachers will work together to share ideas and curriculum planning, strengthening collegiality between the campuses. Teachers: Suzanne Rea and Jamie Boelens.

A New Generation of Readers (Grades 3-5, 32 students, \$1,000). Playaway self-playing digital audio books will be purchased to assist dyslexic students read and listen to quality literature, in an effort to create lifelong readers out of children who struggle to read. Teachers: Cynthia Ann Zaldivar, Kristi Zorn and Zandra Celis-Hardin.



FEBRUARY 23, 2011
UIW Rosenberg Sky Room

DINNER & AUCTION

Live Auction, Big Board, and Silent Auction

BENEFITING

**the AH School Foundation
and The Mule Team**

Become an Underwriter by
Sponsoring a Table for Ten

TRAIL BOSS \$1,500

or

WRANGLER \$1,000

(210) 832-5957

www.AHSchoolFoundation.org

SAVE THE DATE

HOWARD EARLY CHILDHOOD CENTER:

Science Smart at an Early Age (Pre-K and Kindergarten, 365 students, \$3,599) This program will allow students to enrich their science skills by utilizing "Science on the Go" carts. The carts will be loaded with specialized equipment and tools to provide hands-on learning activities. The carts will move from room-to-room, providing students with engaging and challenging lessons which will enhance their understanding of science. Teachers: Megan Massey, Dan St. Romain, and Mary Wright.

ALUMNI CONNECT

Your fellow Alumni want to know what you're up to. Many of us live and work in San Antonio, but some have moved on. Let's keep in touch.

Send us your pictures, personal updates and photos from Alumni events. We may use it in a future issue.

Give us a call: 210-832-5957

or Send us an email: ahfoundation@ahisd.net

Class of 1980



More than 50 members of the Class of 1980 partied at the SACC.

The Class of 1980 celebrated its 30th reunion on Sept. 10-11. The reunion started with a tailgate party Friday night before the football game. Approximately 90 classmates and their guests enjoyed food, drinks and catching up before the football game. Saturday night, the class had a party at the San Antonio Country Club and enjoyed good food and the music of the Lost Mule Band. The band members have been together for over 30 years and is made up primarily of fellow classmates.

The class of 1980 also raised funds to make a donation to the Alamo Heights School Foundation. The donation will be recognized with a plaque on a chair at the high school auditorium as part of the Foundation's "Be Chairitable" campaign. Funds raised will go toward the Foundation's endowment to benefit the district's teachers for the future. Many of the members of the class of 1980 now have children in the District and strong support the work of the Foundation.

Class of 1960



Class of 1960 Reunion Planning Committee

Front Row L-R: Jo Lynne Musselman Meador, Anits Bell Davies, Sally Janecek Watson. 2nd Row L-R: Marie Mahone Half, John Tate, Corky Carnahan. 3rd Row L-R: Marilyn Caldwell Leinweber, Donnie Moeller. 4th Row L-R: Bill Prodgen, Rick Sauer, Tom Davies.

“The Class of 1960 is the best, better by far than all the rest.”

Their class motto never rang so true as it did at their 50th reunion.

The reunion was held in San Antonio on October 22-24 with a weekend full of activities, laughs and even some tears as they remembered their 45 classmates who were no longer with them. The weekend started with a party at the home of John and Toby Tate. The highlight of the evening was Mary McMillan Fisher's signing of One Hundred Years of Excellence: The District's Story of the Alamo Heights Independent School District that she wrote for the district's Centennial celebration.

The class was treated to a viewing of Marie (Class of '60) and Hugh Half's world-renowned private collection of American Impressionists. Nostalgia set in as they lunched at La Fonda, Sunset Ridge and then went on a tour of the high school. Saturday night's big event was held at the San Antonio Country Club with decorations, music and menu from an earlier era. Well-known members of the class who attended were Jim Cullum and David Johnson. Brunch at the San Antonio Botanical Gardens proved to be an appropriate ending to a wonderful weekend of sharing and enjoying old friends... all a little older, but all loyal Mules!

The Class of 1971 is planning its 40th reunion in 2011.

Check out their website www.ahhs71.com for more information or e-mail Toni Schmid Stevenson at tschmid@austin.rr.com to send your updated information.

The Class of 1962 is celebrating their 50th reunion in 2012.

Please visit their website for more information: <http://ahhs1962.org/45thYearReunion.htm>

Give Back

MAKE A GIFT TO THE FOUNDATION

Donate to the Endowment, FACE Campaign, Business Honor Roll, or contact us for more information. Your gift is tax-deductible—the Alamo Heights School Foundation is a 501(c)(3) nonprofit organization, and gifts are tax-deductible to the extent allowed by law. Our giving year is July 1–June 30.

FACE GIVING LEVELS*

Up to \$99..... Friends of the Foundation
 \$100-\$249..... Century Club
 \$250-\$499..... Blue & Gold Club
 \$500-999..... Educators' Circle
 \$1,000-2,499..... Heart of Excellence Society
 \$2,500-4,999..... Honor Society
 \$5,000-9,999..... Principals' Circle
 \$10,000+..... Renaissance Society

ENDOWMENT GIVING LEVELS

\$1-99..... Supporters
 \$100-249..... Contributors
 \$250-499..... Tutors
 \$500-999..... Mentors
 \$1,000-4,999..... Educators
 \$5,000-9,999..... Benefactors
 \$10,000-24,999..... Founders
 \$25,000-99,999..... Patrons
 \$100,000-499,999..... Standard Bearers
 \$500,000-999,999..... Visionaries
 \$1,000,000+..... Horace Mann Society

BUSINESS HONOR ROLL LEVELS*

\$500..... Bronze Level
 \$1,000..... Silver Level
 \$3,000..... Gold Level
 \$5,000..... Platinum Level

* To see benefits, please visit our website www.ahschoolfoundation.org



YOUR INFORMATION:

Name: _____
 Address: _____
 City, State, Zip: _____
 Email: _____
 Daytime Phone: _____
 Evening Phone: _____

I am: Alumni (Class of _____) Past Parent(s)
 Current Parent(s) Past Grandparent(s)
 Current Grandparent(s) Friend(s)
 AHISD Faculty/Staff

GIFT INFORMATION:

Check in the amount of \$ _____ is enclosed and made payable to the AHSF

Credit Card: VISA MasterCard \$ _____

Name on Card: _____
 Billing Address: _____
 Billing Zip: _____
 Card Number: _____ Exp. Date: _____
 Signature: _____

I WOULD LIKE TO DESIGNATE MY GIFT TO:

- FACE (annual campaign)
- General Endowment Fund
- Business Honor Roll
- Johnnie Eng Endowed Fund for Teaching Excellence
- Caroline Gose Memorial Fund
- Ida Kennedy Fund
- Martha Spoor Young Writers Fund
- Wellness Program
- Paul Foerster Math Fund
- In honor of _____
- In celebration of _____
- In memory of _____

MATCHING GIFTS

- Yes, I would like to increase the impact of my support! My/Our company will match this gift. (Please include your employer's matching gift forms or call the Foundation office at 210.832.5957 for more information.)

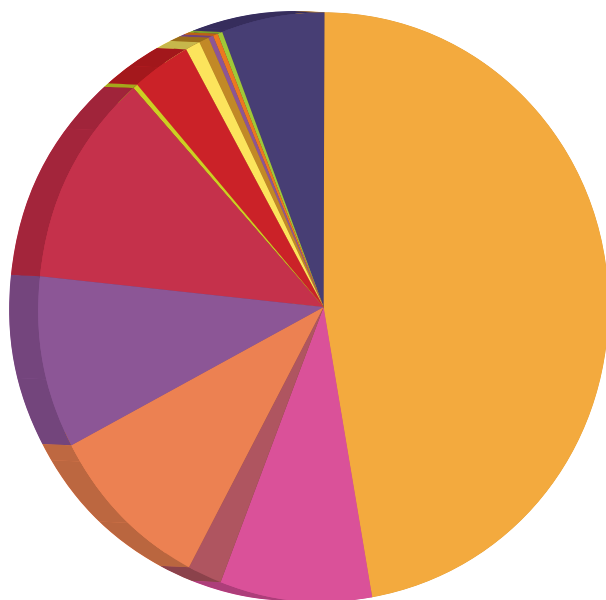
PLEASE RETURN COMPLETED FORM TO:

AHSF, P.O. Box 171393
 San Antonio, Texas 78217

Gifts are also accepted online at www.ahschoolfoundation.org.

Financial Information

2009-2010 DISTRIBUTIONS



● Grant for Teacher Salaries.....	\$ 250,000
● Wellness Program.....	\$ 45,685
● Additional Grants.....	\$ 10,000
● Teacher Grants & Awards.....	\$ 49,672
● Teacher for Academic Excellence in Science.....	\$ 50,000
● Glenn R. & Sally P. Ramsdell Chair.....	\$ 62,359
● Rob Boldrick Memorial Grant.....	\$ 1,964
● Faye Langley Cowden Chair.....	\$ 17,000
● Johnnie Eng Fund.....	\$ 4,800
● Caroline Gose Fund.....	\$ 3,000
● Martha Spoor Young Writers Fund.....	\$ 700
● Graham Ladensohn Memorial Lecture Series.....	\$ 2,200
● Scholarships.....	\$ 30,000
TOTAL	\$ 528,433

STATEMENT OF FINANCIAL POSITION

As of June 30, 2010

ASSETS

Cash and cash equivalents.....	\$ 179,740
Pledges Receivable, net of allowance	\$ 44,952
Investments—at fair market value	\$ 4,160,442

TOTAL ASSETS

\$ 4,385,134

LIABILITIES AND NET ASSETS

LIABILITIES

Accounts payable	\$ 0
Scholarships payable	\$ 30,000
Deferred revenue.....	\$ 0
Total Liabilities	\$ 30,000

NET ASSETS

Unrestricted	\$ 155,735
Temporarily Restricted	\$ 174,029
Permanently Restricted	\$ 4,025,370
Total Net Assets	\$ 4,355,134

TOTAL LIABILITIES AND NET ASSETS

\$ 4,385,134

Reach Greater Heights

FACE CAMPAIGN

The Foundation's annual campaign, **FACE—For All Children—Excellence—**ensures that AHISD is strong each year. Funds from this campaign directly support each year's AHISD operating budget. Participation from the entire community has been critical to its success. Parents, alumni, grandparents, and neighbors **ALL** play a part in this effort! Funds generated by the **FACE** campaign allow the Foundation to provide teaching excellence by:

- Supporting Teacher Salaries
- Funding Grants to Support Teaching in the Classroom
- Making an Immediate Impact in the Classroom Without Reliance on Government Funding
- Increasing the Foundation's Endowment.

The best part...**FACE** contributions remain within Alamo Heights School District which means local control of **ALL** monies raised. Gifts received July 1, 2009 through June 30, 2010:

SUPERINTENDENT'S CIRCLE

Mr. & Mrs. Darryl Mix

RENAISSANCE SOCIETY

Mr. & Mrs. Steven Lee
Mr. & Mrs. Mark Mays

PRINCIPAL'S CIRCLE

Mr. & Mrs. Randy Cain
Mr. Charles Cheever III
Mr. Chris Cheever
Wendy & Tom Wirth and
the Double W Charitable
Foundation Fund of the San
Antonio Area Foundation
Mr. & Mrs. David M. Rogers

HONOR SOCIETY:

Mr. & Mrs. Phillip Bakke
Mr. & Mrs. Sam Bright
Mr. & Mrs. Craig A. Clayton
Mr. & Mrs. Taliaferro Cooper
Mr. & Mrs. Stephen L. Golden
Mr. & Mrs. Joe R. Peacock
Mr. & Mrs. John Stankey

HEART OF EXCELLENCE:

Dr. & Mrs. Garrett Andersen
Mr. & Mrs. Chip H. Archer III
Mr. & Mrs. Hays L. Arnold
Dr. Bill Atlas & Dr. Marnie Ross
Mr. & Mrs. Terry Bailey
Mr. & Mrs. Burton Barnes III
Mr. & Mrs. Bobby Baugh
Mr. & Mrs. B. Kyle Beck
Ms. Nancy Belinsky &
Dr. Debra Williams
Dr. & Mrs. Richard Benedikt
Mr. & Mrs. Ken Bennett
Mr. & Mrs. Albert M. Biedenharn III
Mr. & Mrs. Brian Biggs
Dr. Toni Dollinger &
Rabbi Barry Block

Mr. & Mrs. Thomas Bradley
Mr. & Mrs. Brian P. Brady
Dr. & Mrs. Doug Britton
Dr. & Mrs. Kevin Brown
Mr. & Mrs. Duane Bunce
Mr. & Mrs. James Burch
Mr. & Mrs. Nick Campbell
Mr. & Mrs. Will C. Campbell
Mr. & Mrs. Plack Carr III
Mr. & Mrs. Tony Carter
Mr. & Mrs. Stephen B. Cavender
Mr. & Mrs. Charles E. Cheever, Jr.
Mr. & Mrs. Bob T. Cohen
Dr. Fred Corley
Jim and Kelly Daniell
Charitable Fund
Dr. & Mrs. David Davis
Dr. & Mrs. Thomas L. Davis
Mr. & Mrs. Vince Dawson
Mr. & Mrs. Emery Lee Delavan, Jr.
Mr. & Mrs. Peter DeWitt
Mr. & Mrs. Joe Dubrof
Mr. & Mrs. John K. Durbin
Mr. & Mrs. Richard Ellwood
Ms. Jane Everhart
Mr. & Mrs. Carl Fellbaum
Fidelity Charitable Gift Fund
Mr. & Mrs. Rick Flume
Mr. & Mrs. Bruce Gates
Mr. & Mrs. Wade Giddens
Dr. Bernice Gonzalez &
Mr. Craig Brown
Mr. & Mrs. James C. Goudge
Mr. & Mrs. David S. Gragg
Dr. & Mrs. Chris Graham
Mr. & Mrs. Kennon H. Guglielmo
Mr. & Mrs. Robert Gurwitz
Mr. & Mrs. Tom Guy
Mr. & Mrs. Guy Hamilton
Mr. & Mrs. Tracy E. Hammer
Dr. & Mrs. Robert "Tad" Hampton
Mrs. Francis J. Hearn
Mr. & Mrs. Peter Herff III

Dr. Peter Hollimon
Mr. & Mrs. Bill Johnson
Mr. & Mrs. Richard Johnson
Dr. Cordell Jones &
Mrs. Catherine Berkeley-Jones
Mr. & Mrs. Edward C. Kershner
King Family Trust
Mr. & Mrs. Johnston T. Kleck
Kocurek Family Foundation
Mr. & Mrs. Mark E. Krenger
Dr. & Mrs. Kenneth R. Krueger
Mr. & Mrs. Stanley E. Kuenstler
Mr. & Mrs. Martin J. Landon
Mr. & Mrs. Ted Liljenwall
Mr. & Mrs. Keith Long
Dr. & Mrs. James Lutz
Dr. & Mrs. Michael Magoon
Mr. & Mrs. Bill Maloy
Mr. & Mrs. Christopher Marco
Mr. & Mrs. George W. Mauze II
Mr. & Mrs. Stephen McAllister
Mr. & Mrs. Dan McCarty
Mr. & Mrs. Ritchie McCulloch
Mr. & Mrs. David H. Meaden
Dr. & Mrs. Kurt Meissner
Merrill Lynch & Co. Foundation, Inc.
Mr. & Mrs. Todd Mills
Ms. Charlotte B. Milner
Mr. & Mrs. Michael Morell
Mr. & Mrs. Robert Mullins
Mr. & Mrs. Mitchell E. Nichols
Mr. & Mrs. Arthur C. Nicholson
Mr. & Mrs. Dan C. O'Connor
Dr. Diana Oxford & Ms. D.R. Moore
Paloma Blanca Enterprises, Inc.
Mr. & Mrs. Joe L. Peacock, Jr.
The Scott Petty Foundation
Mr. & Mrs. Chris Pheiffer
Dr. & Mrs. C. Stuart Pipkin
Dr. Fred Rhame
Mr. & Mrs. J. Scott Rose
Mr. & Mrs. Bobby Rosenthal
Shackelford Family Charitable Fund

Dr. & Mrs. Richard Shaffer
Mr. & Mrs. George V. Shaw III
Mr. & Mrs. Pete S. Sitterle III
Mr. & Mrs. Richard Sparr
Dr. & Mrs. Robert P. Spears
Mr. & Mrs. Thomas K. Spurgeon
Mr. & Mrs. Raymond Suire
Mr. & Mrs. John Sylvester
Mr. & Mrs. Terry Thrift III
Mr. & Mrs. Troy Toman
Mr. John Toohey
Mr. & Mrs. James H. Travis
Col. & Mrs. Thomas J. Tredici
Vaughan Foundation
Mr. & Mrs. Robert L. Vaughan
Mr. & Mrs. Michael Viola
Mr. & Mrs. Richard Wagner
Mr. & Mrs. Steven A. Waters
Wells Fargo Community
Support Campaign
Mrs. LouAnne & Landon Wellford
Mr. & Mrs. Daniel E. Wigodsky
Mr. & Mrs. Dean Williams
Mr. & Mrs. Robert B. Willoughby III
Mr. & Mrs. Robert B. Wray
Dr. & Mrs. Keith Wright
Dr. & Mrs. Bartell Zachry

EDUCATOR'S CIRCLE:

Mr. & Mrs. David Adelman
Mr. & Mrs. Kenneth W. Allen
Mrs. Barbara Wheelless Altgelt
Mr. & Mrs. Brett M. Alvheim
Mr. & Mrs. Rick M. Archer
Mr. & Mrs. Mote Baird
Mr. & Mrs. Graham Baker
Mr. & Mrs. Douglas Barber
Mr. & Mrs. Mike Barry
Mr. & Mrs. Bruce Bartlett
Mr. & Mrs. Buck Benson
Mr. & Mrs. Calhoun Bobbitt
Mr. & Mrs. Cooper Boddy
Mrs. Jean M. Braley

Mr. & Mrs. Chuck Brown
 Mr. & Mrs. Harry H. Brusenhan, Jr.
 Mr. & Mrs. Steven Buffkin
 Dr. & Mrs. John A. Campagna
 Mr. & Mrs. Jim Campbell
 Mr. & Mrs. Roy R. Campbell III
 Mr. & Mrs. Robert W. Carington, Jr.
 Dr. & Mrs. Efrem Castillo
 Mr. & Mrs. Larry Cochran
 Mr. & Mrs. Kevin Collins
 Drs. Deborah and Bruce Conway
 Mr. & Mrs. Tom Cunningham
 Mr. & Mrs. Jon K. Daubert
 Mr. & Mrs. William R. Davis, Jr.
 Dr. & Mrs. Mike Decherd
 Mr. & Mrs. Clifton F. Douglass III
 Mr. & Mrs. Joe Eustace
 Dr. Nancy & Mr. Rob Finney
 Mr. & Mrs. Eric Fisher
 Mr. & Mrs. Clare Flesher
 Mr. & Mrs. Rick Foster
 Mr. Stephen Foster &
 Dr. Linda Foster
 Mr. & Mrs. Chris Frey
 Drs. Lon and Tess Fry
 Mr. & Mrs. Paul Gaedke
 Dr. & Mrs. Charles Gay
 Mr. & Mrs. James Glover
 Mr. & Mrs. Henry B. Gonzalez
 Mr. & Mrs. Don M. Goudge
 Mr. & Mrs. John D. Greehey
 Mr. & Mrs. William Wendell Hall
 Mr. & Mrs. John T. Hancock
 Mr. & Mrs. Robert Harris
 Mr. & Mrs. Thomas Hawley
 Mr. & Mrs. Steve Hays
 Mr. & Mrs. Herbert W. Hill, Jr.
 Ms. Julie Hill
 Mr. & Mrs. Mike Holland
 Mr. & Mrs. John Howell
 Mr. & Mrs. Alex Huddleston
 Dr. & Mrs. Clayton H. Hudnall
 Mr. & Mrs. Stanislov Ivanov
 Mr. & Mrs. Richard Kardys
 Harris and Eliza Kempner Fund
 Kimberly-Clark Foundation
 Dr. & Mrs. Thomas A. Kingman
 Mr. & Mrs. Paul Krause
 Mr. & Mrs. Jerry Lammers
 Lellen and Rick Lane Fund
 Dr. & Mrs. Michael Leonard
 Mr. & Mrs. Rick LePere
 Mr. & Mrs. Wilhelm Liebmann
 Linebarger Goggan Blair
 & Sampson, LLP
 Mr. & Mrs. John B. Low
 Mr. & Mrs. Douglas H. Lowe
 Mr. & Mrs. Peter Mako
 Malitz Construction, Inc
 Mr. & Mrs. Greg Mann
 Dr. & Mrs. Joseph Martin
 Mr. & Mrs. David K. McAllister
 Mr. & Mrs. Grant McFarland
 Mr. & Mrs. Elkin McGaughy
 Mr. & Mrs. G. Lott McIlhenny
 V.H. McNutt Memorial Foundation
 Mr. & Mrs. Thomas A. McRae
 Mrs. Jo Lynne Meador

Mr. & Mrs. Richard Menchaca
 Miller Family Fund
 Mr. & Mrs. De Miller
 Mr. & Mrs. David Monnich
 Mr. & Mrs. Gil Moore
 Mr. & Mrs. Lew Moorman
 John Newman Family Charitable
 Trust of the San Antonio Area
 Mr. & Mrs. Brad Noe
 Mr. & Mrs. Scott O'Brien
 The Harris K. & Lois G.
 Oppenheimer Foundation
 Mr. & Mrs. Richard Peacock, Jr.
 Mr. & Mrs. Gardner Peavy
 Mr. & Mrs. Chris Penrose
 Ms. Blair B. Perry
 Mr. & Mrs. Bruce Petersen
 Mr. Frank Peterson &
 Ms. Cristen Linton-Peterson
 Mr. & Mrs. John R. Phillips
 Mr. & Mrs. Todd A. Piland
 Mr. & Mrs. Clint Plant
 Priority Builders, Inc.
 Mr. & Mrs. John Robb
 Mr. & Mrs. Steve Rubin
 Samuels Glass Company
 Mr. & Mrs. Thomas E. Sanders
 Mr. & Mrs. John Scherrer
 Mr. & Mrs. Lawrence D. Smith
 Mr. & Mrs. Madison A. Smith
 Mr. & Mrs. Carlton Soules
 Mr. & Mrs. Stephen R. Souter
 Mr. & Mrs. David Spoor
 Felix L. & Jo Stehling Foundation
 Mr. & Mrs. Don Stephens
 Mr. & Mrs. Robert Story
 Mr. & Mrs. Joe Straus III
 Mr. & Mrs. Bryan Stuckey
 Tim and Annie Swan
 Charitable Fund
 Mr. & Mrs. Glenn Thomas
 Mr. & Mrs. John C. Thomas
 Mr. & Mrs. James O. Thompson, Sr.
 Mr. & Mrs. Patrick B. Tobin
 Mr. & Mrs. Thomas Tyng
 Mr. & Mrs. Arthur G. Uhl III
 USAA Matching Gift Fund of the
 San Antonio Area Foundation
 Valero Energy Foundation
 Mr. & Mrs. Mark Vanham
 Mr. & Mrs. Jim Vasquez
 Mr. & Mrs. Doyle T. Walsh
 Mr. & Mrs. Tullos Wells
 Ms. Tara Richardson Welmaker
 Mr. & Mrs. John Williams
 Mr. & Mrs. Craig Wilson
 Mr. & Mrs. Barclay Wong
 Mr. & Mrs. W. Richey Wyatt
 Mr. & Mrs. James F. Yancy
 Mr. & Mrs. Jim Powell Zachry
 Mrs. Mary L. Zeigler

BLUE & GOLD CLUB:

Mr. & Mrs. Gene Ames III
 Mr. James Arthur
 Mr. & Mrs. Harry A. Balling
 Mr. & Mrs. Cory J. Basso
 Mr. & Mrs. Wade Benton

Mr. & Mrs. Jaime Billups
 Mr. Lynn Boyd III
 Mr. & Mrs. Richard T. Brady
 Mr. & Mrs. Hutch Bryan
 Mr. & Mrs. Steven Bubel
 Mr. & Mrs. Brock Coleman
 Mr. & Mrs. Edward D. Dingivan
 Mr. & Mrs. Richard L. Durbin, Jr.
 Mr. & Mrs. Daniel Easley
 Ms. Jennifer Flores
 Mr. & Mrs. Steve Gilbert
 Mr. & Mrs. Sid J. Greehey
 Mrs. T. Maxey Hart, Jr.
 Mr. & Mrs. Dan A. Hughes, Jr.
 Dr. & Mrs. R. Blair Jackson
 Ms. Susan A. Johnson
 Mr. & Mrs. Steve Lang
 Mr. & Mrs. John R. Locke, Jr.
 The Lynch Foundation
 Mr. & Mrs. Ben A. Mandel
 Mr. & Mrs. Craig McMahon
 Mr. & Mrs. Anders Monsen
 Mrs. Kathleen DeWees Naumann
 Mr. & Mrs. Stacy Oelsen
 Mr. & Mrs. Joey Oliver
 Mr. & Mrs. William T. Orr III
 Mr. & Mrs. John H. Osborne
 Dr. and Mr. Mickey Seger
 Mr. L.T. Solomon
 Mr. & Mrs. David Stephens
 Mr. & Mrs. Dan Stich
 Joe R. and Emilie F. Straus
 Charitable Trust
 Mr. & Mrs. William Robert Strunk
 Mr. Patrick H. Swearingen, Jr.
 Mr. & Mrs. Richard Tamez
 Mr. & Mrs. John Vollmer, Jr.
 Ms. Ann Denton Wells
 Mr. & Mrs. Duane L. Westerman
 Mr. & Mrs. Tom Wright
 Mr. & Mrs. Sam Youngblood

FRIENDS OF THE FOUNDATION:

Mr. & Mrs. Philip Abdouch
 Alamo Heights HS Baccalaureate
 Alamo Heights Retired Personnel
 Dr. Susan Allen
 Mr. & Mrs. David Angula
 Argyle Foundation
 ARMA San Antonio Chapter
 Ms. Peggy Arnold
 Drs. Patricia & Andrew Auber
 Mr. & Mrs. Richard N. Azar II
 Mr. & Mrs. Jon Bader
 Ms. Sue Bain
 Ms. Claudia Abbey Ball
 Mr. & Mrs. Steve Barker
 Mrs. Jean T. Bell
 Mr. Stanton Bell, Sr.
 Ms. Tracey Bennett
 Mr. & Mrs. Stephen Blount
 Mr. & Mrs. Patrick E. Bouchard
 Mr. & Mrs. Herb Bradshaw
 Dr. Harold Brannan
 Ms. Pat Brannen
 Mr. & Mrs. Dawson Bremer

Dr. Ruth and Mr. Paul
 Bujanda-Moore
 Mr. & Mrs. George F. Cabaza
 Mr. & Mrs. Tim Caffrey
 Mrs. Roy R. Campbell, Jr.
 Mr. & Mrs. Vince Cantu
 Dr. & Mrs. Chris Carabin
 Mr. & Mrs. Adrian Cavallini
 Dr. & Mrs. Jerry Christian
 Mr. & Mrs. Walter W. Church
 Ms. Brooke Connolly
 Mrs. Hillary Conrey
 Council of Educational Facility
 Planners International
 Mr. & Mrs. Wally S. Cox
 Dr. & Mrs. Robert M. Craig
 Dr. & Mrs. Dick O. Creamer
 Mr. & Mrs. Jim R. Daniell
 Dr. & Mrs. Larry R. Davis
 Mrs. Olive Davis
 Mr. & Mrs. Kenneth Dorbandt
 Ms. Leigh Dryden
 Mr. & Mrs. William T. Egbert
 Mr. & Mrs. Earl K. Engel
 Mr. & Mrs. Dean Faulkner
 Dr. & Mrs. William P. Fitch III
 Mr. & Mrs. Paul Foerster
 Mr. & Mrs. William A. Freed
 Mr. & Mrs. Pat B. Frost
 Mr. & Mrs. Matt Graham
 Dr. & Mrs. Robert Hale
 Mr. & Mrs. Jim Half
 Mr. & Mrs. David Hall
 Ms. Patricia P. Hardy
 Dr. Mihaela Harea
 Mr. Howard L. Haring
 Mr. & Mrs. Boyd Haugen
 Mr. & Mrs. Tom Hawkes
 Mr. & Mrs. Joe Hazlewood
 Mr. Peter J. Hennessey Jr.
 Mrs. Cornelia Herff
 Gloria Rivera Herrera, M.D.
 Mr. & Mrs. Joe Ingle
 Mr. & Mrs. Christopher T. Kardys
 Mr. Robert A. Keahey
 Mr. Jon King
 Mr. Richard M. Kleberg III
 Dr. & Mrs. Allan Kownslar
 Mrs. Lorraine Lancaster
 Mr. & Mrs. Weir Labatt III
 Mrs. Michelle Lanfear
 David K. Langford
 Mr. & Mrs. Albert Lara
 Dr. & Mrs. J. Fletcher Lee
 Mr. & Mrs. Robert B. Lee
 Mrs. Sarah Joe LeMessurier
 Mr. & Mrs. Erik G.V. Liljenwall
 Dr. Michael Linder &
 Dr. Catherine Spezia
 Dr. & Mrs. David Lloyd
 Mr. & Mrs. George M. Luhn, Jr.
 Mr. Sherman P. MacDaniel
 Mr. & Mrs. Peter F. Maddox
 Mr. Tim Maher
 Mr. & Mrs. John Marvin
 Mr. & Mrs. Wilbur L. Matthews II
 Mrs. M. L. Matthews
 Rev. & Mrs. Gerald McAllister

FACE CAMPAIGN: Cont.

Mrs. Louise S. McDonough
Dr. & Mrs. Joe McFarlane
Dr. & Mrs. Arthur S. McFee
Mrs. George Willis McMurry, Jr.
Mr. & Mrs. Tim Mergele
Mr. & Mrs. John C Mineo
Mrs. Laurie M. Miracle
Mr. John K. Mitchell
Mr. & Mrs. John Monroe
Mr. & Mrs. Carl H. Moore
Mr. & Mrs. Robert Moy
Mr. & Mrs. David Naumann
Mrs. Nancy Norman
Mr. & Mrs. Billy B. Osborn III
Mr. & Mrs. Stephen M. Oswald
Ms. Amber Palacios
Dr. & Mrs. Patrick Palmer
Mrs. Mary H. Parker
Mr. & Mrs. Thomas L. Powell
Mrs. Margaret C. Preston
Ms. Ann Pryor
Mr. & Mrs. Willie Rainosek
Miss Myra Ann Ramos
Mr. & Mrs. John E. Reynolds
Mr. & Mrs. Jon Richmond
Mr. & Mrs. Mark Richter
Mr. & Mrs. Paul A. Rode
Mr. & Mrs. Scott Rubsamen
Dr. & Mrs. Frank C. Sammis III
Ms. Janett Sarran
Mrs. Linda Schlather
Mr. & Mrs. Parker Scott
Mr. & Mrs. Sam B. Shannon
Mr. & Mrs. Ben Shub
Mr. & Mrs. F. Ames Smith
Dr. & Mrs. Paul H. Smith, Jr.
Mrs. Harvey P. Smith
Mr. & Mrs. Paul H. Smith
Mr. Steve Spears
Mr. & Mrs. Jack J. Spector
Mr. & Mrs. F.O. Spriggs
Mr. & Mrs. Bradley Stephenson
Ms. Barbara E. Stieren
Mrs. June S. Stokes
Mr. Stephen O. Straub
Mr. Joe G. Street
Mr. & Mrs. Devereaux S. Temple
Mr. & Mrs. Kenneth W. Thomas, Jr.
Mrs. Patricia M. Townsend
Mr. & Mrs. Ken Vick
Mr. Michael H. Wasson
Mr. & Mrs. Patrick Watson
Dr. & Mrs. Richard S. Wayne
Mr. & Mrs. Dan Webster
Mr. & Mrs. Brian Weiner
Dr. & Mrs. Robert A. Weiss
Mr. & Mrs. Pal C. Wenger, Jr.
Mr. & Mrs. Geoffrey Werner
Dr. Paul Wiegand
Mrs. Herman S. Wigodsky
Mr. & Mrs. George Williams
Mr. & Mrs. Sergio Zacarias

IN HONOR OF:

Alamo Heights Retired Personnel
In Honor of Mrs. Marguerite Millican
Mr. & Mrs. Phillip Bakke
In Honor of Mr. Don Strange
In Honor of Mrs. Shari Pruitt
In Honor of Dr. Wendell Carroll Schorlemer
Mrs. Jean T. Bell
In Honor of Richard O. Arneson
Mr. & Mrs. Patrick E. Bouchard
In Honor of Class of 1975
Dr. Harold Brannan
In Honor of Mr. Leo Hearn
Ms. Pat Brannen
In Honor of Mr. Don Strange
In Honor of Mr. Jared Steneger
Dr. & Mrs. Jerry Christian
In Honor of Mr. Buzz Griffith
Mr. & Mrs. Walter W. Church
In Honor of Mrs. Jean Marmion
Dr. & Mrs. Robert M. Craig
In Honor of Mr. & Mrs. David S. Gragg
Mr. & Mrs. Joe Dubrof
In Honor of Alamo Heights School Foundation Board
Mr. & Mrs. James C. Goudge
In Honor of Alamo Heights ISD Administration
In Honor of Alamo Heights ISD Board
In Honor of Mr. Leo Hearn
Mr. & Mrs. Robert Gurwitz
In Honor of Mr. Joe Dubrof
Mrs. Sarah Joe LeMessurier
In Honor of Mrs. Mary L. Zeigler
In Honor of Mr. Randy White
In Honor of Ms. Sue Telle
In Honor of Ms. Sandra B. Ashworth
Dr. & Mrs. Michael Leonard
In Honor of Mrs. Kari L. Butts
Malitz Construction, Inc
In Honor of Mr. & Mrs. Stephen B. Cavender
In Honor of Mr. & Mrs. Michael N. Venson
In Honor of Mr. & Mrs. Rick Cavender
In Honor of Mr. & Mrs. James M. Cavender III
Mr. & Mrs. Ben A. Mandel
In Honor of Dr. Frank Alfaro
Mr. & Mrs. G. Lott McIlhenny
In Honor of Alamo Heights ISD Board
Mr. & Mrs. Thomas L. Powell
In Honor of Mr. Leo Hearn
Mr. & Mrs. John E. Reynolds
In Honor of Wesley Cooper
Mr. & Mrs. Jon Richmond
In Honor of Mr. & Mrs. James C. Goudge
Mr. & Mrs. David M. Rogers
In Honor of Mrs. Leigh Ann King
In Honor of Mrs. Jyl Cain
In Honor of Mrs. Amy Dunn Smith
In Honor of Mr. Joe Dubrof
Mr. & Mrs. Scott Rubsamen
In Honor of Mrs. Suzanne Goudge

Mrs. Linda Schlather
In Honor of Mrs. Mary L. Zeigler
In Honor of Dr. Dana Bashara
In Honor of Ms. Sue Telle
In Honor of Ms. Sandra B. Ashworth
In Honor of Mrs. Beverly Burton
Ms. Barbara E. Stieren
In Honor of Mr. & Mrs. Jim R. Daniell
Mrs. Patricia M. Townsend
In Honor of Sean McDonald
Mr. & Mrs. Ken Vick
In Honor of Mrs. Suzanne Goudge
Dr. & Mrs. Richard S. Wayne
In Honor of Mr. Joe Dubrof
Mr. & Mrs. Pal C. Wenger, Jr.
In Honor of Mrs. Margaret Rolle Dullnig
Mr. & Mrs. George Williams
In Honor of Mrs. Mary L. Zeigler
Mrs. Mary L. Zeigler
In Honor of Alamo Heights ISD Board

IN MEMORY OF:

Alamo Heights HS Baccalaureate
In Memory of Courtney Marshburn
Alamo Heights Retired Personnel
In Memory of Judith Christ
In Memory of Lillian McLaugherty
Argyle Foundation
In Memory of Mr. William Hollingshead
ARMA San Antonio Chapter
In Memory of Mr. William Hollingshead
Mr. & Mrs. Richard N. Azar II
In Memory of Mr. William Hollingshead
Mr. & Mrs. Jon Bader
In Memory of Mr. Humphrey Bucko Price
Mr. & Mrs. Phillip Bakke
In Memory of Mr. Roy Campbell, Jr.
In Memory of Mr. Billy Cavender
In Memory of Mrs. Barbara Daniell
In Memory of Ann Fahrenthold
In Memory of Mrs. Gloria Labatt
In Memory of Mrs. Margaret W. Brannan
Mrs. Jean T. Bell
In Memory of Mrs. Elva Wisakowsky
In Memory of Mrs. Lucile Cowles
In Memory of Mrs. Barbara Daniell
In Memory of Mr. Charles Sawtelle
Mr. & Mrs. Stephen Blount
In Memory of Mr. William Hollingshead
Mr. & Mrs. Richard T. Brady
In Memory of Mrs. Margaret W. Brannan
Ms. Pat Brannen
In Memory of Mr. William Hollingshead
Mr. & Mrs. Wally S. Cox
In Memory of Mrs. Barbara Daniell
Mr. & Mrs. Jim R. Daniell
In Memory of Mrs. Margaret W. Brannan
Mrs. Olive Davis
In Memory of Mrs. Margaret W. Brannan
Mr. & Mrs. William T. Egbert
In Memory of Mr. William Hollingshead

Mr. & Mrs. James C. Goudge
In Memory of Mrs. Barbara Daniell
Ms. Patricia P. Hardy
In Memory of Mrs. Elva Wisakowsky
John Newman Family Charitable Trust of the San Antonio Area
In Memory of Mrs. Gloria Labatt
Mr. Richard M. Kleberg III
In Memory of Mr. William Hollingshead
Dr. & Mrs. Allan Kownslar
In Memory of Mrs. William Hollingshead
Mr. & Mrs. Weir Labatt III
In Memory of Mr. William Hollingshead
David K. Langford
In Memory of Mr. William Hollingshead
Mr. & Mrs. Erik G.V. Liljenwall
In Memory of Mr. William Hollingshead
Mrs. M. L. Matthews
In Memory of Mr. William Hollingshead
In Memory of Mrs. Margaret W. Brannan
Mays Family Foundation
In Memory of Mrs. Gloria Labatt
Mrs. George Willis McMurry, Jr.
In Memory of Mr. William Hollingshead
Mr. & Mrs. Thomas A. McRae
In Memory of Mrs. Margaret W. Brannan
Mr. & Mrs. David Naumann
In Memory of Mrs. Barbara Daniell
Mrs. Kathleen DeWees Naumann
Mr. & Mrs. Billy B. Osborn III
In Memory of Mrs. Barbara Daniell
Mr. & Mrs. Thomas L. Powell
In Memory of Mrs. Margaret W. Brannan
Mr. & Mrs. Willie Rainosek
In Memory of Mrs. Elva Wisakowsky
Mr. & Mrs. John E. Reynolds
In Memory of Mrs. Ruthie Shafer Cahill
In Memory of Loretta Delores Mahan
In Memory of Mr. Stephen Nisbet
Mr. & Mrs. Paul A. Rode
In Memory of Mr. William Hollingshead
Dr. & Mrs. Frank C. Sammis III
In Memory of Mr. William Hollingshead
Ms. Janett Sarran
In Memory of Mrs. Elva Wisakowsky
Mr. & Mrs. Paul H. Smith
In Memory of Mr. Billy Cavender
Mr. Steve Spears
In Memory of Mrs. Margaret W. Brannan
Mr. & Mrs. F.O. Spriggs
In Memory of Mr. William Hollingshead
Mrs. June S. Stokes
In Memory of Mr. William Hollingshead
Mr. & Mrs. Kenneth W. Thomas, Jr.
In Memory of Mrs. Elva Wisakowsky
Mr. & Mrs. James H. Travis
In Memory of Mrs. Elva Wisakowsky
Mr. & Mrs. Dan Webster
In Memory of Mr. William Hollingshead
Mr. & Mrs. Pal C. Wenger, Jr.
In Memory of Mrs. Louise Batz
In Memory of Mrs. Ruthie Shafer Cahill

In-Kind Donations

AHHS Athletic Dept.
 Alamo Heights Little League
 Alamo Heights Minor
 Emergency Clinic
 Alamo Heights Pet Clinic
 Alamo Heights School
 Foundation Board
 All About You Personal Training
 Allie G's
 Mr. & Mrs. Tommy Arnim
 Arts Center Enterprises, Inc.
 AT&T
 Mr. & Mrs. John C. Austin
 Mr. & Mrs. Phillip Bakke
 Dr. & Mrs. Thomas P. Ball, Jr.
 Ballet Conservatory of South Texas
 Mr. & Mrs. Cory J. Basso
 Bath Junkie
 Mr. & Mrs. Mark Bauer
 Dr. & Mrs. Richard Benedikt
 Beto's Comida Latina
 Mr. Jason Black
 Coach Mark Bond
 Mr. & Mrs. Chuck Bridgman
 Broadway Bank
 Mr. & Mrs. Dustin Brooks
 Mr. & Mrs. Chuck Brown
 Coach Don Byrd
 C.H. Guenther & Son, Inc.
 Carneiro, Chumney & Co., L.C.
 Mr. & Mrs. Stephen B. Cavender
 Ms. Melanie Cawthon
 Cheesy Jane's
 Classic European Skincare
 Martha Corona
 Crumpets Restaurant & Bakery
 Dallas Cowboys Merchandising, LTD
 Mr. & Mrs. Jim R. Daniell
 Delta Granite & Marble
 Dry Comal Creek Vineyards
 and Winery
 Mr. & Mrs. Joe Dubrof
 Dulce Design Photography
 Mrs. Townsend Durbin
 Express News Taste Dept.
 FaceLogic
 Mr. & Mrs. Carl Fellbaum
 Coach Bruce Fink
 Mr. and Mrs. Clare Flesher
 Mr. & Mrs. Rick Flume
 Mr. & Mrs. William A. Freed
 Mr. & Mrs. S. Carl Friedsam

Friend of Foundation
 Friends of Football
 Friends of Mule Team
 Frost National Bank
 Mr. & Mrs. Bruce Gates
 Get Nailed, Inc.
 Mr. & Mrs. Gilles Ghez
 Dr. & Mrs. Jay Gibson
 Ms. Elizabeth Godwin
 Coach Alma Goodwin
 Mr. & Mrs. Sid J. Greehey
 Grove Hill, Ltd.
 Hacienda Landscape
 Mr. & Mrs. William Wendell Hall
 Coach Ron Harris
 Coach Danny Hayes
 Hazel Smyth Jewelry
 Heights Tuxedo
 Dr. & Mrs. Clayton H. Hudnall
 James Food Revolution
 Jason's Deli
 Dr. Cordell Jones & Mrs.
 Catherine Berkeley-Jones
 Josephs Men's Wear
 JS Satel
 Julian Gold
 Just Cups, Just for Fun
 Mr. & Mrs. George A. Kampmann, Jr.
 Mr. & Mrs. Michael R. Kiolbassa
 Deborah Kline
 Mr. & Mrs. Paul Krause
 Ms. Kim Kujawa
 Mr. & Mrs. Martin J. Landon
 Mr. & Mrs. Rod Lewis
 Lincoln Heights Animal Hospital
 LS Hair Designs
 Dr. & Mrs. James Lutz
 Dr. & Mrs. Michael Magoon
 Mr. & Mrs. John A. Malitz
 Mr. & Mrs. Christopher Marco
 Mr. David Martinez
 Mrs. Kathi Martinez
 Martin's Gardens
 Mr. Gregory C. Massari
 McNally Financial Services
 Mr. & Mrs. Paul E. McSween III
 Memory Lane Monograms & Gifts
 Ms. Charlotte B. Milner
 MKB Designs
 Mrs. Mary Monroe
 Christy Moore
 Mr. & Mrs. Lew Moorman

Newby's
 Mr. & Mrs. Sam Noble
 Mr. & Mrs. Scott O'Brien
 Mr. & Mrs. Tobin Olson
 Orderup
 Paesano's Restaurant Group
 Pagoda
 Panchito's Mexican Restaurant
 Coach Courtney Patton
 Mr. & Mrs. Joe L. Peacock, Jr.
 Mr. & Mrs. Bruce Petersen
 Mr. & Mrs. Todd A. Piland
 Reed Candle Company
 Mrs. Cari Richter
 Mr. & Mrs. David M. Rogers
 San Antonio Country Club
 San Antonio Flower Company
 Sassy Designs
 Coach Chris Sharp
 Shear Image
 Shetler Wade Jewelers
 Mr. & Mrs. David Shetler
 Mr. & Mrs. Barton T. Simpson
 Mr. & Mrs. Pete S. Sitterle III
 Dr. & Mrs. Paul Slattery
 Dr. & Mrs. Lon Smith
 Spectrum Athletic Club
 Ms. Debbie Speegle
 Mr. & Mrs. David Spoor
 Mr. & Mrs. John Stankey
 Ms. Shannon Stephens
 Cheri Stith

Mr. & Mrs. William Robert Strunk
 Mr. & Mrs. Bradley A. Sundin
 Tackle Box
 Ms. Claudette Tamez
 Mr. & Mrs. William E. Terry
 Mr. & Mrs. Steve Thomas
 Dr. Mark L. Thornton, MD
 Mr. & Mrs. Carter Thurmond
 Thurmunz
 Tom Jackson, Living Historian
 Treasure Trouve/Art SA Gallery
 Trinity Flowers & Gifts
 Mr. & Mrs. Robert L. Vaughan
 Mr. & Mrs. Roberto Vazquez
 Veintech
 Mr. & Mrs. Michael Viola
 Vivroux Sports
 Mrs. Cheryl Vollmer
 The Wash Tub
 Water's Restaurants
 Water 2 Wine
 Drs. Landon and LouAnne Wellford
 Senator Jeff Wentworth
 Mr. & Mrs. Duane L. Westerman
 Mr. & Mrs. Robert B. Willoughby III
 Mr. & Mrs. Robert H. Wolfe
 Mr. & Mrs. James Wolff
 Mr. & Mrs. Barclay Wong
 Mr. & Mrs. Bryan J. Worden
 Mr. & Mrs. Sam Youngblood
 You're Invited Fine Stationery
 Zito's Deli & Sandwich Shoppe



L to R: Amy Dunn Smith, Executive Director; Kevin Brown, AHISD Superintendent; Joe Dubrof, 2009-10 AHSF Board President; Craig Clayton, 2009-10 President, AHISD Board of Trustees

This publication lists all donors to the Alamo Heights School Foundation during the 2009–10 fiscal year. We have prepared this report with care. However, in a listing of this length, errors can occur. If you notice an inaccuracy, please accept our apologies and contact the Foundation office at 210.832.5957.



7101 BROADWAY SAN ANTONIO, TEXAS 78209

NONPROFIT ORG.
U.S. POSTAGE
PAID
SAN ANTONIO, TX
PERMIT NO.1197

BOARD OF DIRECTORS

Susan Gragg

President

Doreen Magoon

President-Elect

Elaine Bright

Treasurer

Anne Krause

Marketing Vice President

Jim Daniell

Development Vice President

Ann McRae

Resource Allocation

Vice President

Carolyn Spurgeon

Secretary

Cory Bakke

Kyle Beck

Amy Benedikt

Jyl Cain

Kelly Cavender

Pam Cohen

Richard Ellwood

Josie Flesher

Peter Herff

Lisa Krenger

John Low

Katie Meissner

Tiffany Mills

Darryl Mix

David Rogers

Joey Satel

Kim Smith

AL AMO HEIGHTS SCHOOL FOUNDATION

7101 Broadway San Antonio, Texas 78209

Phone: 210.832.5957

EX-OFFICIO

Dr. Kevin Brown

AHISD Superintendent

Joe Dubrof

School Board Liaison

Amy Dunn Smith, CFRE

AHSF Executive Director

